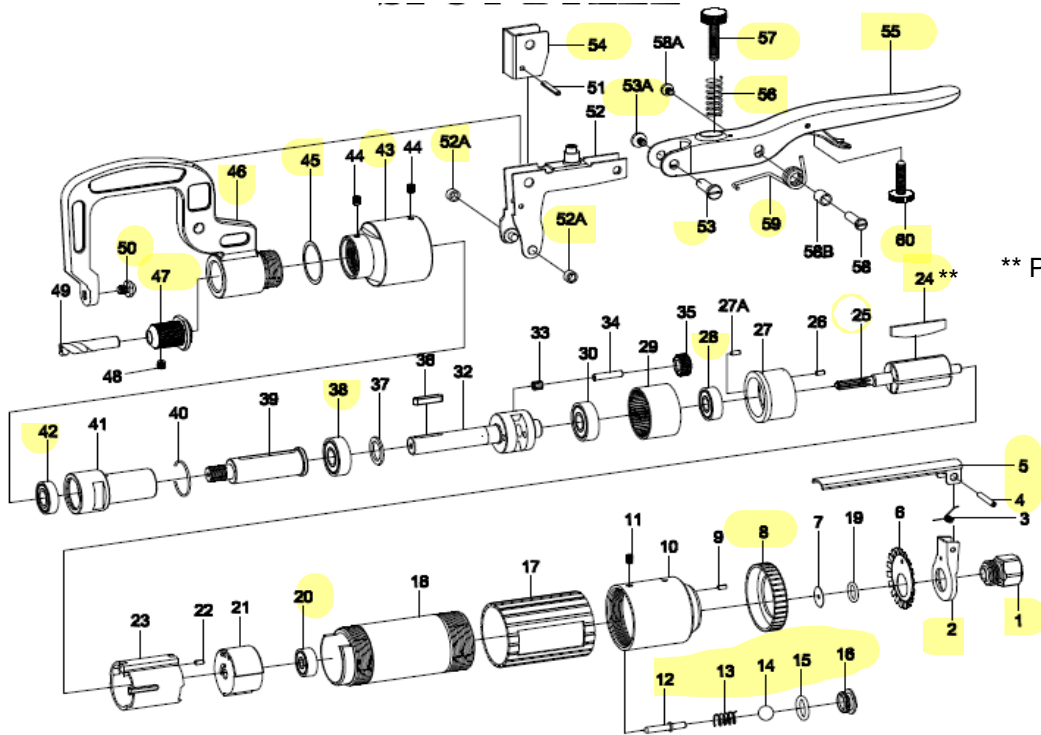


# UP0150000



\*\* PALETTE PER ROTORE 4pz

ITEM NO.	REF. NO.	DESCRIPTION	Q'ty	ITEM NO.	REF. NO.	DESCRIPTION	Q'ty
1	UP0150001	Inlet Bushing	1	34		Pin	2
2	UP0150002	Batten-Ji Fixed Pian	1	35		Idler Gear	2
3		Spring	1	36		Sunk Key	1
4	UP0150004	Spring Pin	1	37		Washer	1
5	UP0150005	Throttle Lever	1	38	UP0150038	Ball Bearing	1
6		Washer	1	39		Spindle Shaft	1
7		Gasket	1	40		Stop Ring	1
8	UP0150008	Air Pressure Fixed Pian	1	41		Bush	1
9		Spring Pin	1	42	UP0150042	Ball Bearing	1
10		Valve Body	1	43	UP0150043	Clamp Nut	1
11		Set Screw	1	44		Set Screw	2
12	UP0150012	Valve Stem	1	45		Washer	1
13	UP0150013	Valve Spring	1	46	UP0150046	Arm	1
14	UP0150014	Ball	1	47	UP0150047	Spindle	1
15	UP0150015	O-Ring	1	48		Set Screw	1
16	UP0150016	Valve Screw	1	49		Drill(8mm)	1
17		Plastic Wrapp	1	49		Drill(6.5mm)	1
18		Motor Body	1	50	UP0150050	Cut In Adjusting Bolt	1
19		O-Ring	1	51		Spring Pin	1
20	UP0150020	Ball Bearing	1	52	UP0150052	Arm Base	1
21		Rear End Plate	1	52A	UP015052A	Bushing	2
22		Spring Pin	1	53	UP0150053	Stud	1
23		Cylinder	1	53	UP015053A	Bolt	1
24	UP0150024	Rotor Blade (4)	4	54	UP0150054	Batten-Ji Fixed Pian	1
25	UP0150025	Rotor	1	55	UP0150055	Grip Handle	1
26		Spring Pin	1	56	UP0150056	Spring	1
27		Front End Plate	1	57	UP0150057	Adjusting Screw	1
27A		Spring Pin	1	58		Screw	1
28	UP0150028	Ball Bearing	1	58A		Bolt	1
29		Internal Gear	1	58B		Collar	1
30		Ball Bearing	1	59	UP0150059	Spring	1
32		Work Spindle	1	60	608A0060	Adjusting Screw	1
33		Needle Roller (2)	2				